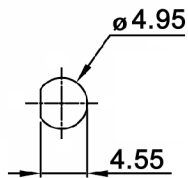
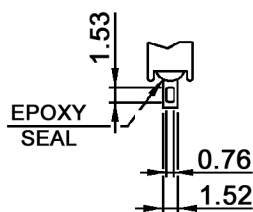


PANEL MOUNTING



SOLDER LUG

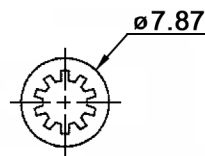
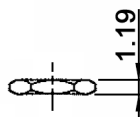
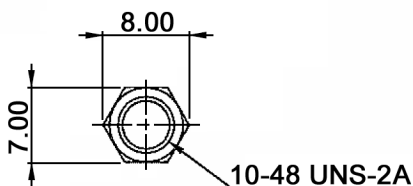


SWITCH FUNCTION

Model No.	POS. 1	POS. 2
	MZP 1 C	OFF
Term. Conn.	OPEN	1-3
Schematic		

HARDWARE:

2 nuts, 1 tooth washer



0.46 THK

Specifications:

- Contact rating: 3A, 120V AC or 28V DC; 1A, 250V AC
- Contact resistance: 20mOhm max. at 2-4V DC
- Insulation resistance: 1000MOhm min.
- Dielectric strength: 1000V RMS
- Operating temperature: -30°C to +85°C
- Mechanical life: 50 000 make-and-break cycles
- Operating force: 200 +/-100gf
- Travel: 0.8-1.0mm
- Material: Case: diallyl phthalate (DAP) (UL94V-0)
Plunger: thermoplastic polyester, black
Bushing: brass, nickel plated
Housing: stainless steel
Contact / terminal: silver plated

Compliance: RohS II (2011/65/EU)

Tolerances: 0.00: ±0.25mm 0.0: ±0.40mm	Date	Name
	08/13	dr
Specifications	10/15	dr
Nut dimensions	09/14	dr
Modifications	Date	Name

MZP 1 C

30 29 10

Page

1/1

knitter-switch